

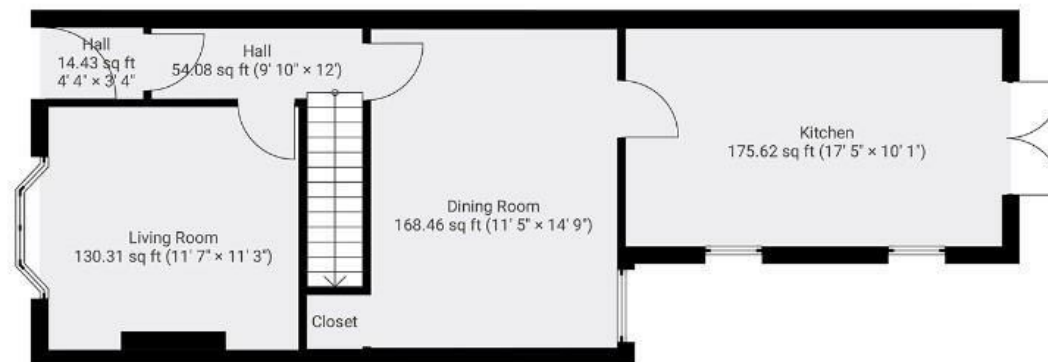
Bellevue Road

ST. GEORGE

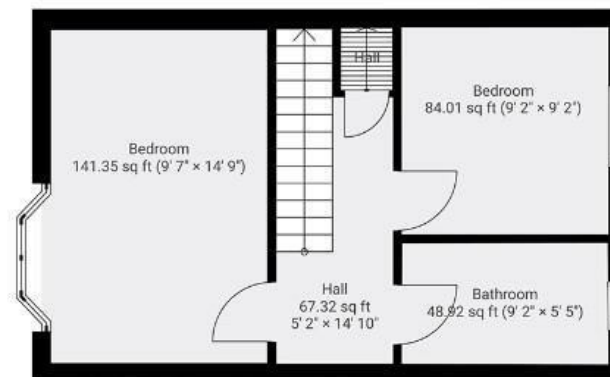
APPROXIMATE FLOOR AREA
96 SQM / 1037 SQFT



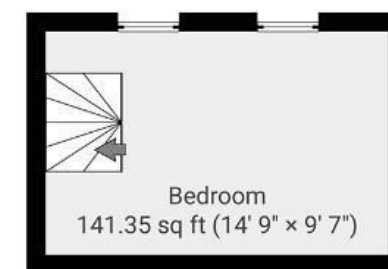
GROUND FLOOR



FIRST FLOOR



LOFT ROOM



Boardwalk

Bellevue Road

ST. GEORGE, BRISTOL

£

£375,000



BS5 7PQ

zzz

2 Bedrooms



1 Bathrooms

'Tucked by the beautiful Troopers Hill nature reserve and a short walk from St George Park, Conham Park, and the River Avon, this Victorian home is a perfect base for strolls, riverside jogs, or dog walks in the friendly BS5 community'

